



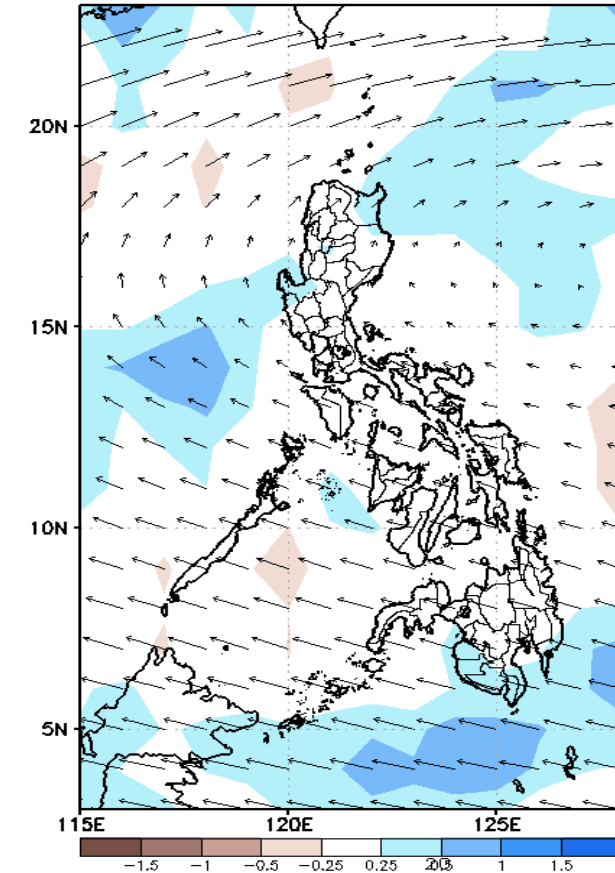
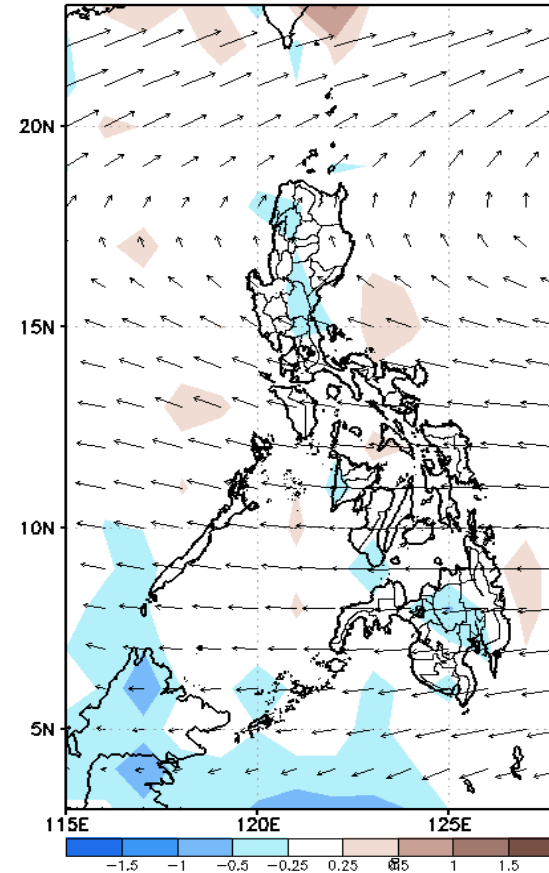
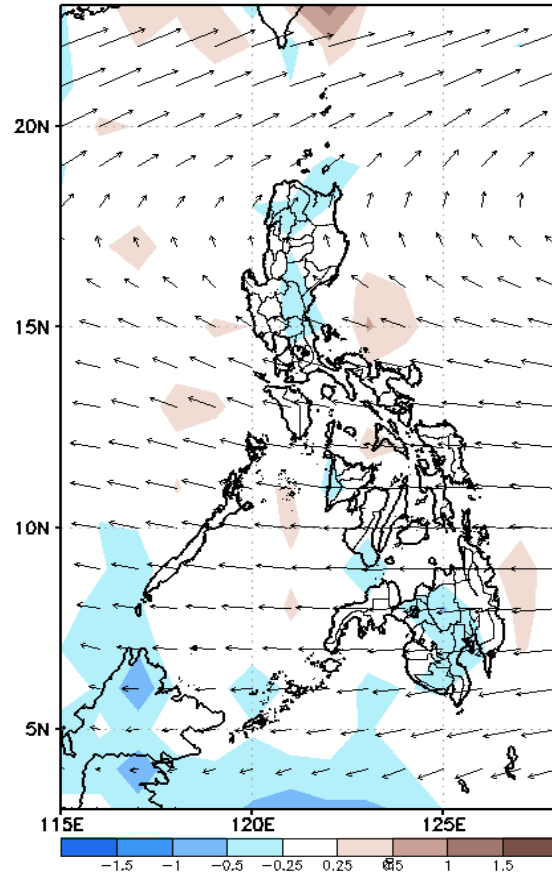
# Week 1 & Week 2 Forecast for the Philippines using GEFS Model



# GEFS Week-1 Forecasts: Divergence & Wind Anomaly

Week 1: January 21-27, 2021

GEFS Week-1 700-hPa Divergence and Wind Anom: GEFS Week-1 850-hPa Divergence and Wind Anom: GEFS Week-1 200-hPa Divergence and Wind Anom  
Valid: 20210121 - 20210127

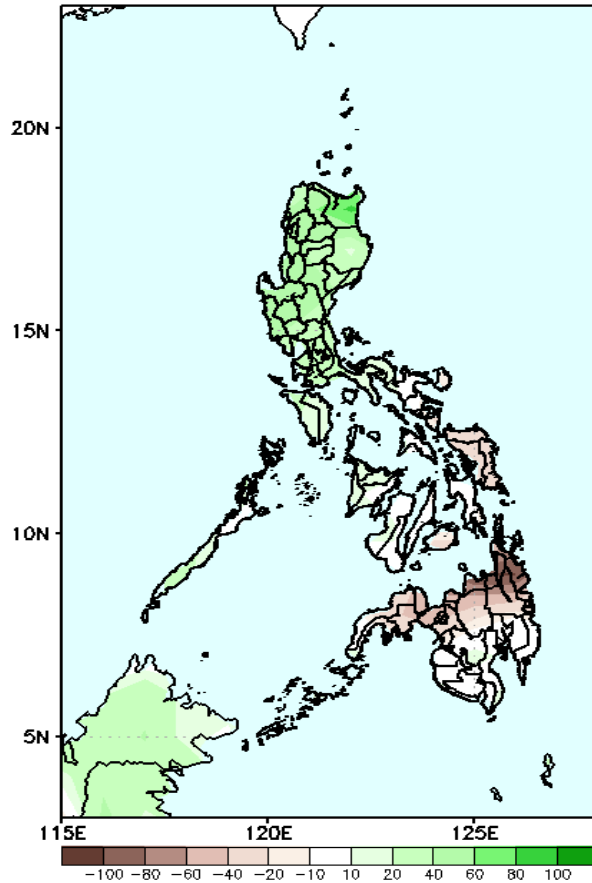


Upper and low level Divergence suggest likelihood of precipitation in Cagayan, most parts of CAR, Nueva Vizcaya, Nueva Ecija, Bulacan, Antique, Negros Occidental and most parts of Central and Southern Mindanao. Northeast Monsoon affecting Extreme Northern Luzon while Easterlies affecting most of the country during the forecast period.

# Precipitation Anomaly and Exceedance Probability > 25/50 mm

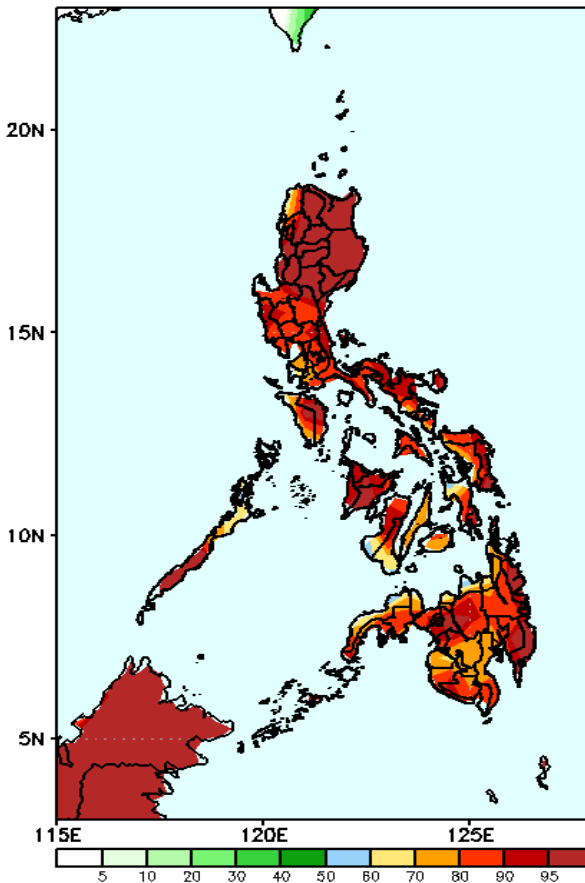
## Week 1: January 21-27, 2021

GEFS Week-1 Precip Anomaly  
Valid: 20210121 - 20210127



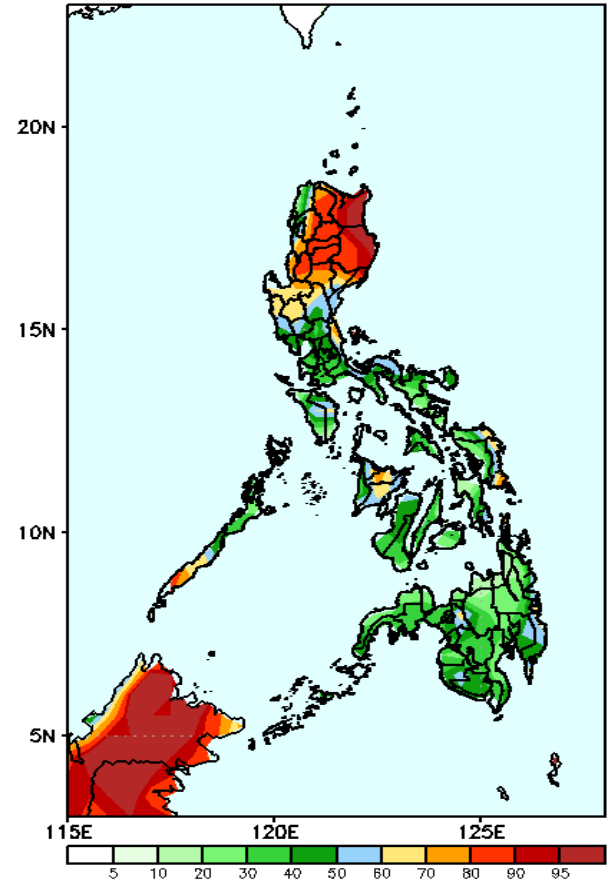
Increase of rainfall of 40-100mm is expected in most parts of Luzon while rainfall deficit of up to 90mm in Visayas and Mindanao.

GEFS Week-1 Exceedance Prob. > 25mm  
Valid: 20210121 - 20210127



High probability of rainfall to exceed 25mm in most parts of the country during the forecast period.

GEFS Week-1 Exceedance Prob. > 50mm  
Valid: 20210121 - 20210127



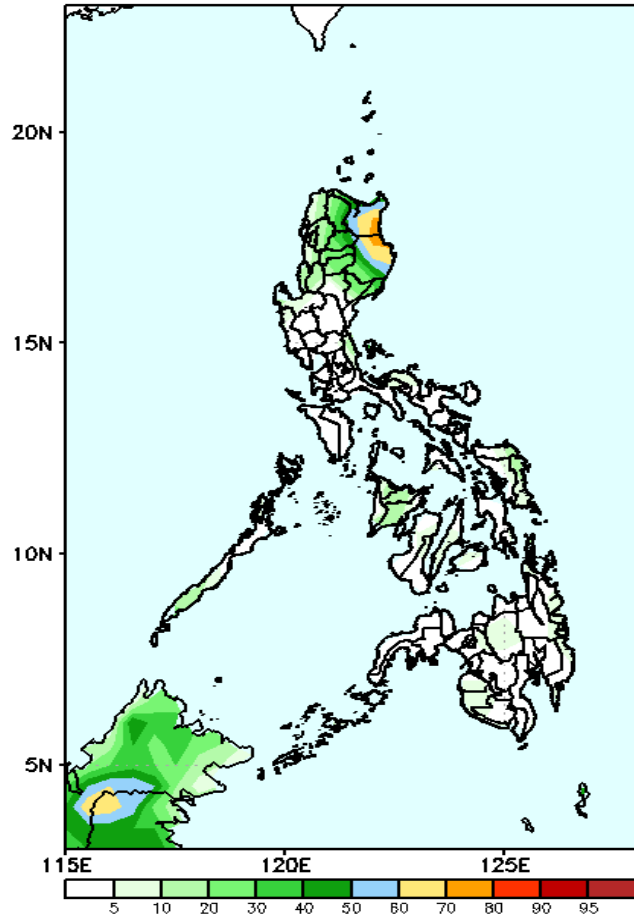
High probability of rainfall to exceed 50mm in northern half of Luzon while less likely in Visayas and Mindanao during the forecast period.



# Exceedance Probability > 100/150/200 mm

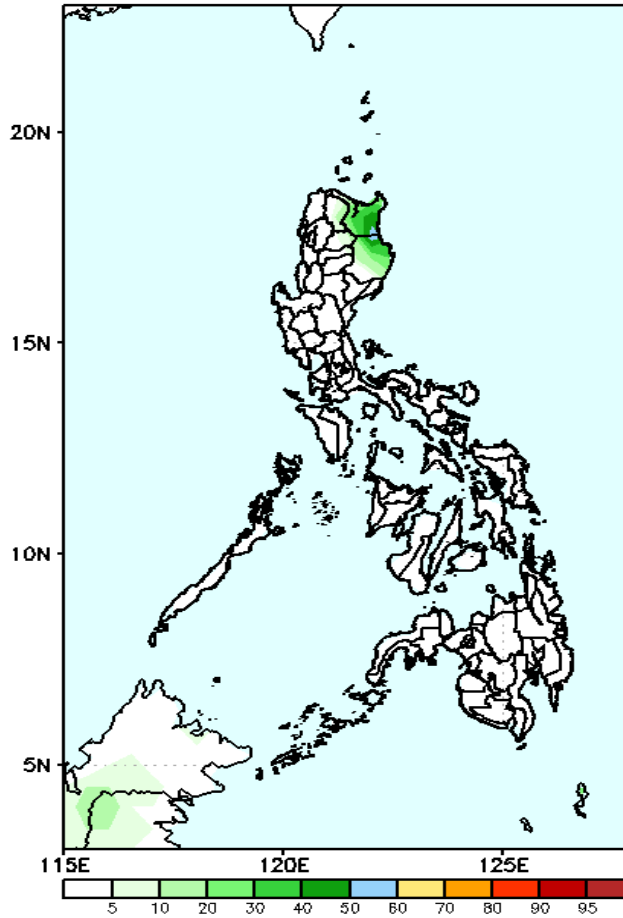
## Week 1: January 21-27, 2021

GEFS Week-1 Exceedance Prob. > 100mm  
Valid: 20210121 - 20210127



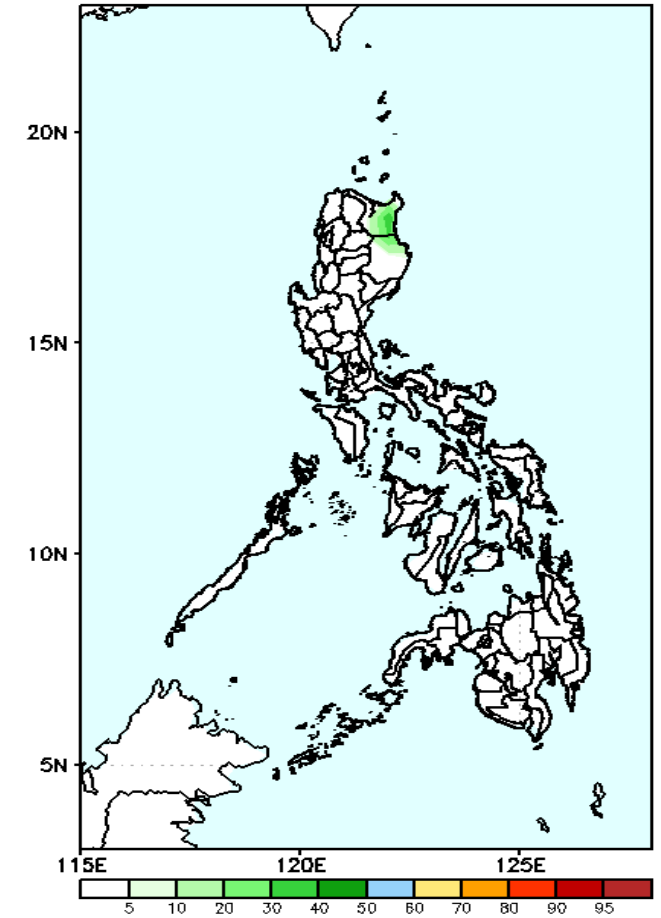
Less probability of rainfall to exceed 100mm in most parts of the country except in Cagayan & Isabela where there is 70-90% probability during the forecast period.

GEFS Week-1 Exceedance Prob. > 150mm  
Valid: 20210121 - 20210127



Less probability of rainfall to exceed 150mm in most parts of the country during the forecast period.

GEFS Week-1 Exceedance Prob. > 200mm  
Valid: 20210121 - 20210127

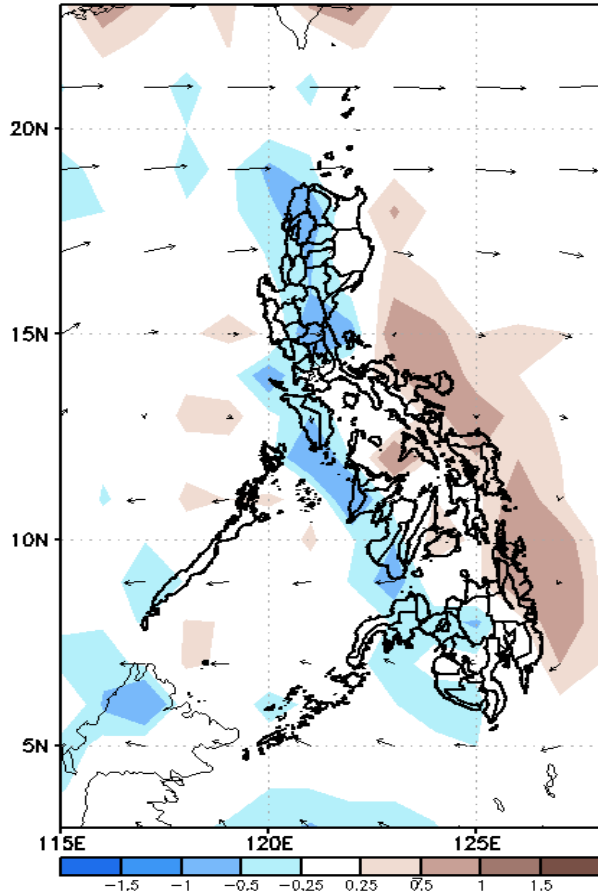


Less probability of rainfall to exceed 200mm in most parts of the country during the forecast period.

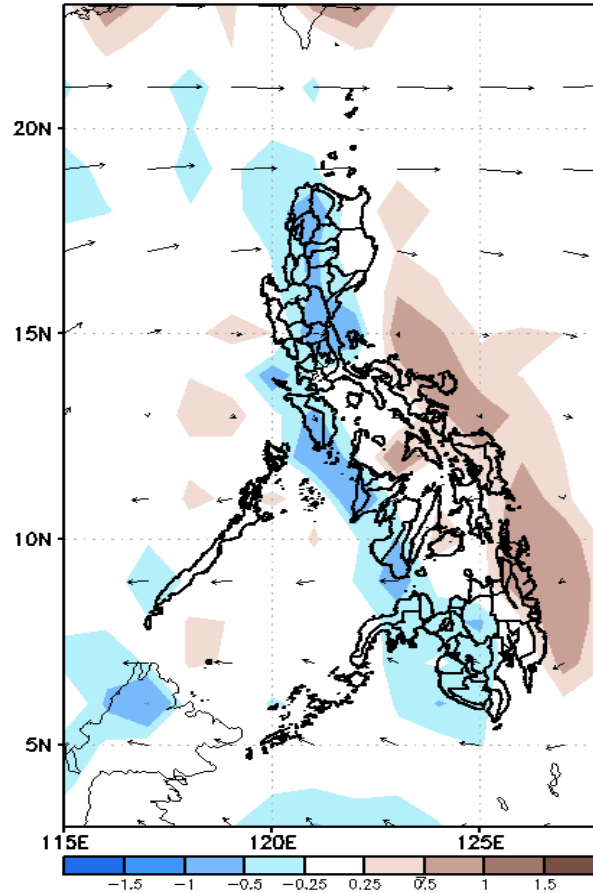
# GEFS Week-2 Forecasts: Divergence & Wind Anomaly

## Week 2: Jan 28, 2020-Feb 03, 2021

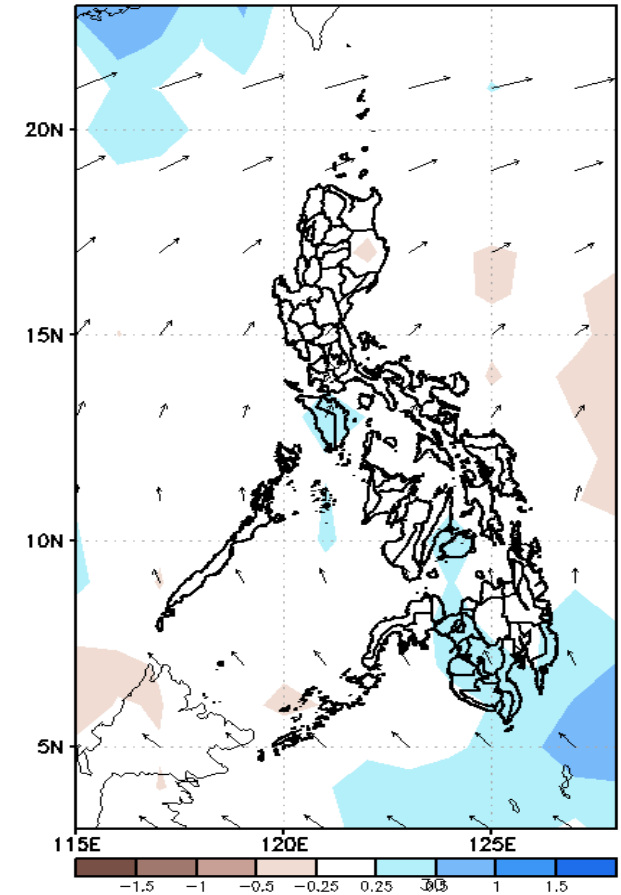
GEFS Week-2 850-hPa Divergence and Wind Anom  
Valid: 20210128 - 20210203



GEFS Week-2 700-hPa Divergence and Wind Anom  
Valid: 20210128 - 20210203



GEFS week-2 200-hPa Divergence and Wind Anom  
Valid: 20210128 - 20210203

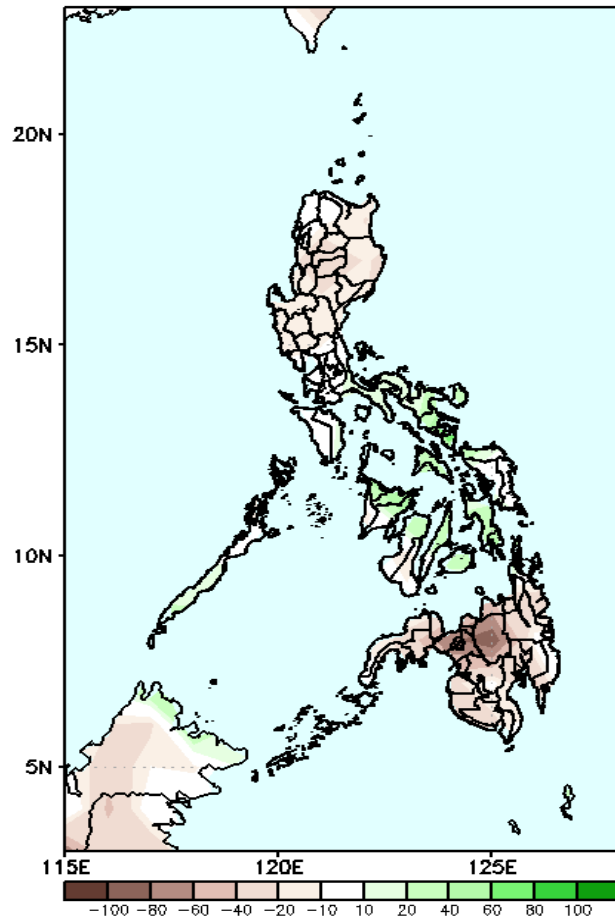


Upper and low level Divergence suggest likelihood of precipitation in most parts of CAR, Ilocos region, most parts of Central Luzon, NCR, Cavite and western sections of Visayas and Mindanao. Northeast Monsoon affecting most parts of Luzon while Easterlies affecting Visayas and Mindanao during the forecast period.

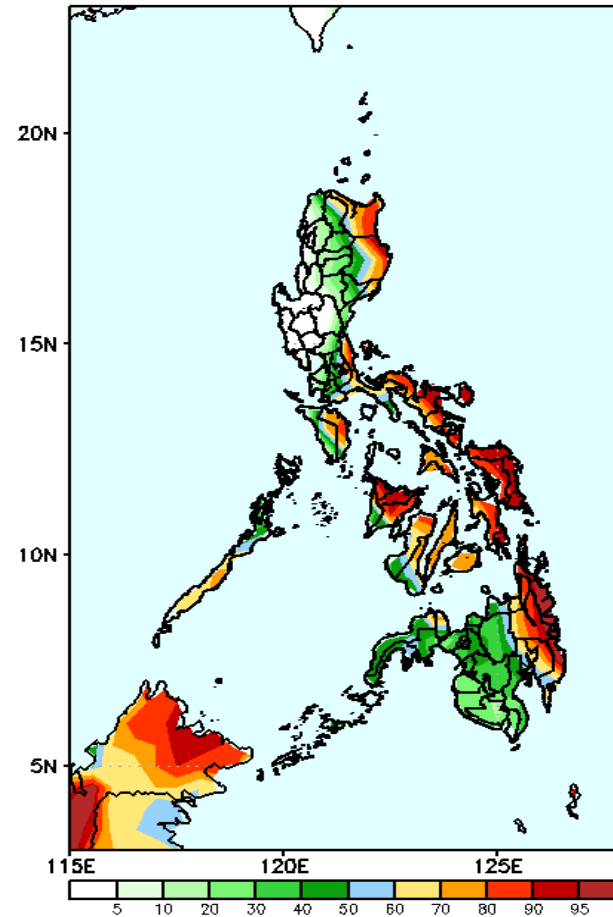
# Precipitation Anomaly and Exceedance Probability > 25/50 mm

Week 2: Jan 28, 2020-Feb 03, 2021

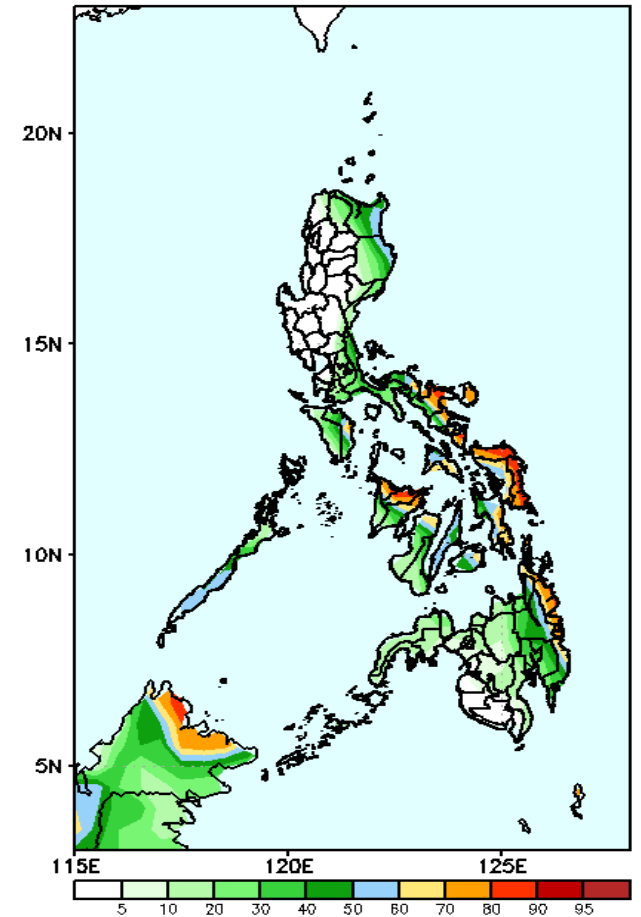
GEFS Week-2 Precip Anomaly  
Valid: 20210128 - 20210203



GEFS Week-2 Exceedance Prob. > 25mm  
Valid: 20210128 - 20210203



GEFS Week-2 Exceedance Prob. > 50mm  
Valid: 20210128 - 20210203



Rainfall deficit of up to 80mm in most parts of Luzon and Mindanao is expected while increase of rainfall of 20-70mm in Visayas during the forecast period.

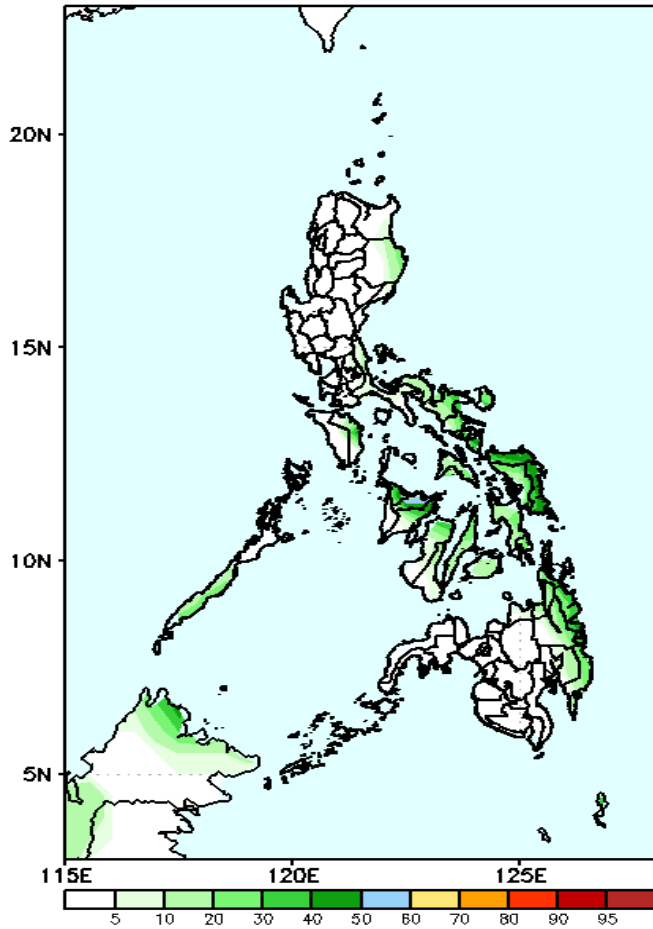
High probability of rainfall to exceed 25mm in the eastern sections of Luzon and Mindanao and most parts of Visayas during the forecast period

Less probability of rainfall to exceed 50mm in most parts of the country except in Bicol Region, Eastern Visayas, Aklan, Capiz and Surigao Provinces where there is 60-90% probability during the forecast period.

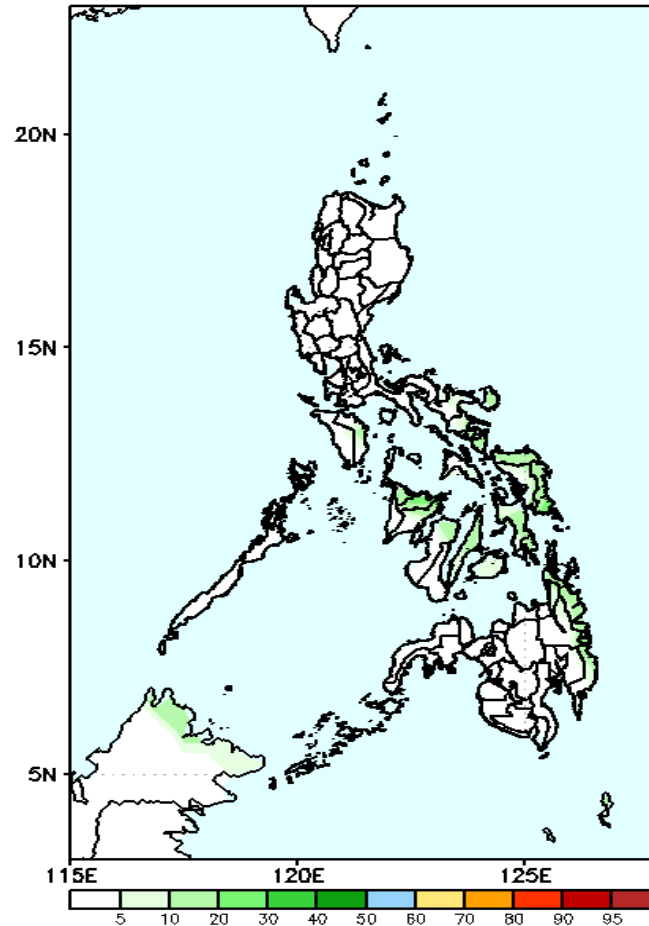
# Exceedance Probability > 100/150/200 mm

Week 2: Jan 28, 2020-Feb 03, 2021

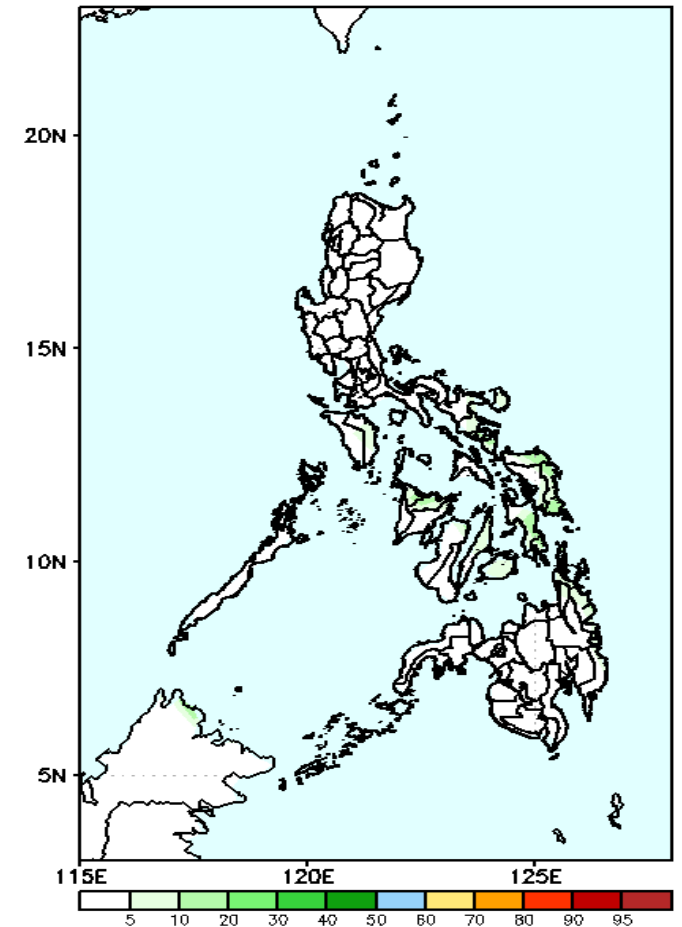
GEFS Week-2 Exceedance Prob. > 100mm  
Valid: 20210128 - 20210203



GEFS Week-2 Exceedance Prob. > 150mm  
Valid: 20210128 - 20210203



GEFS Week-2 Exceedance Prob. > 200mm  
Valid: 20210128 - 20210203

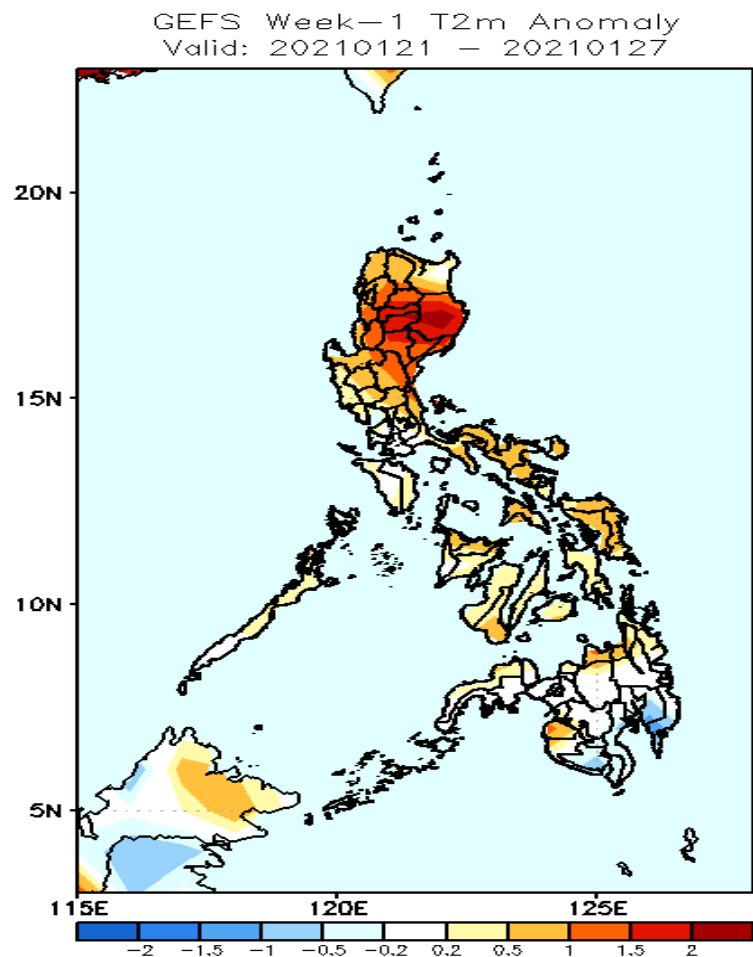


Less probability of rainfall to exceed 100mm in most parts of the country during the forecast period.

Less probability of rainfall to exceed 150mm in most parts of the country during the forecast period.

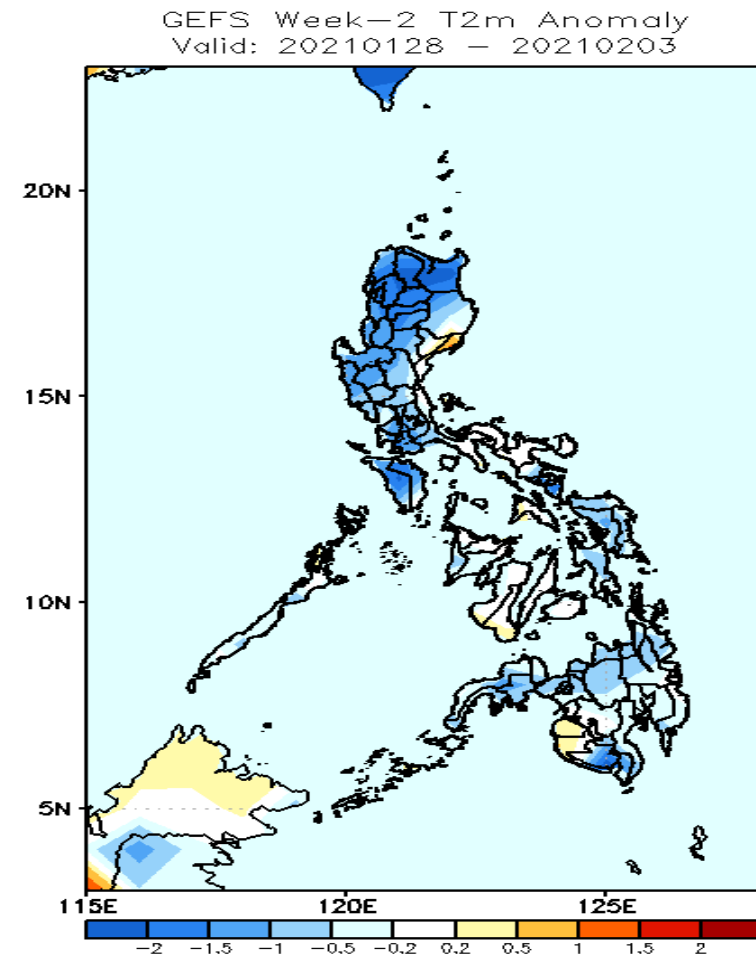
Less probability of rainfall to exceed 200mm in most parts of the country during the forecast period.

# GEFS Week-1 & 2 Forecasts: T2m Anomaly



## 2m Temperature Week 1: January 21-27, 2021

Slightly warmer to warmer than average surface air temperature is expected in most parts of Luzon and average to slight warmer than average in most parts of Visayas and northern Mindanao while cooler than average temperature in southern Mindanao.



## 2m Temperature Week 2: Jan 28, 2020-Feb 03, 2021

Slightly cooler to cooler than average surface air temperature is expected in most part of the country.